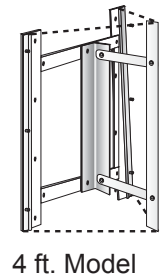


# DIMENSIONAL BANNER FRAME

## Installation Instructions

6 ft. Model

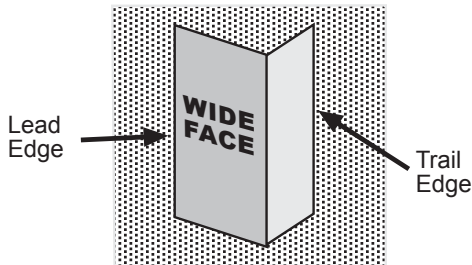


4 ft. Model

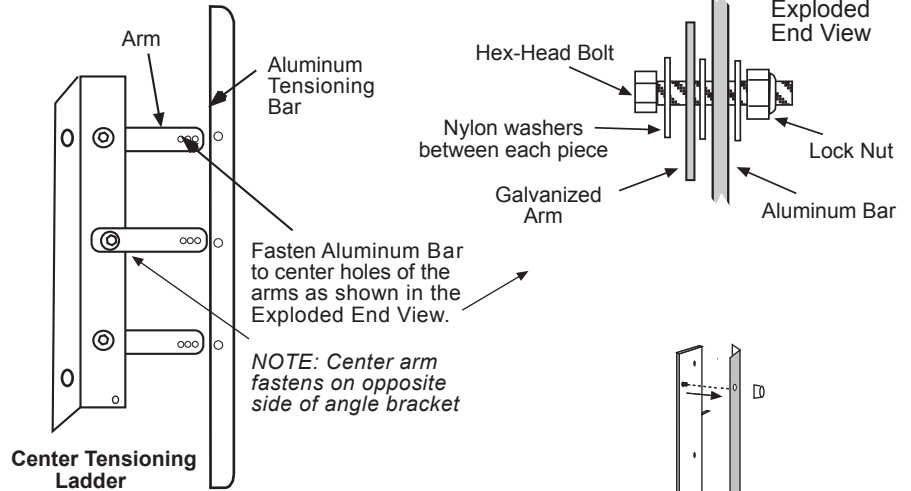
### Before you begin: TOOLS NEEDED: Power Drill; Driver bit; Level; Measuring tape

To accommodate shipping requirements, the Aluminum Bar of the Tensioning ladder has been removed. Please attach it to the Arms as shown opposite.

Note: Be sure your installer uses the proper fasteners for your wall surface. Included are 2-1/2" screws which can be used for wood surfaces. Drivet or masonry walls will require different fasteners. Voxpop can not be responsible for the integrity of the installation, however please have the installer call if there are any questions.

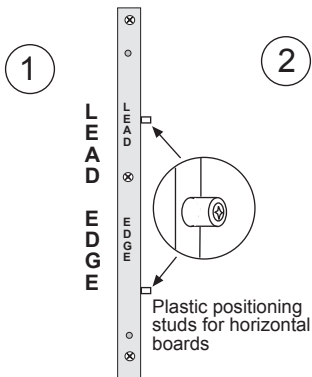
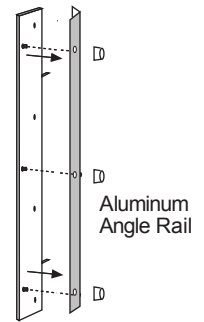


Overview of display. Left side is wider than right side. Display projects about 15" from wall. Be sure display will not impede traffic if installed in Drive thru chutes.

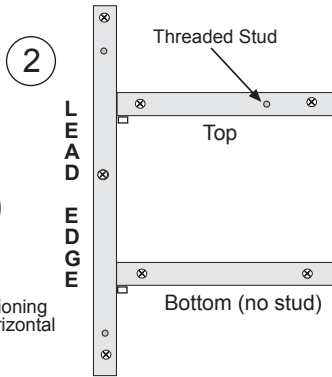


Fasten Aluminum Bar to center holes of the arms as shown in the Exploded End View.

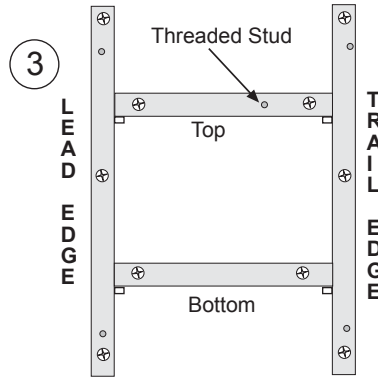
NOTE: Center arm fastens on opposite side of angle bracket



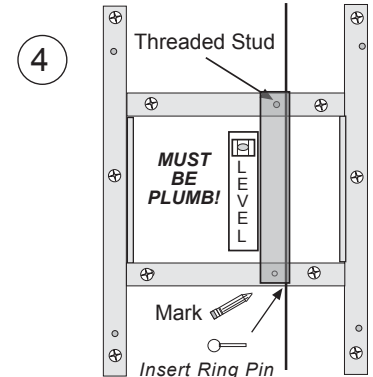
Position Lead edge board vertically where desired. **Makesure it is plumb.** Screw to wall through the pre-drilled holes using fasteners suitable for your particular wall surface



Position horizontal piece (containing stud) as shown above. Make sure it's tight against the vertical board. Level it and fasten it to the wall. Follow the same procedure with the plain piece at the bottom.



Fit the Trail edge vertical board snugly in place and fasten it to the wall.



Put top hole of center Tensioning Ladder on stud as shown - secure with wing nut. Place level against side of metal angle. Move it from side to side until it is exactly plumb. Mark that point and secure with screw to bottom board. Insert Ring Pin in hole at bottom of ladder.

To Install the banner, see "Installing the Banner" instructions attached. Please retain for future use.



10746 Worcester Highway  
Berlin, MD 21811  
FAX: 410-641-1092 Int'l 410-641-1090

Copyright 2002 Voxpop, Inc.

Questions? Problems?  
Call Voxpop for assistance.

**1-800-386-9767**

or e-mail [service@voxpathms.com](mailto:service@voxpathms.com)