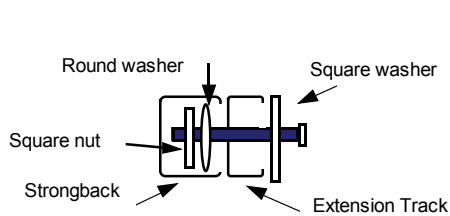


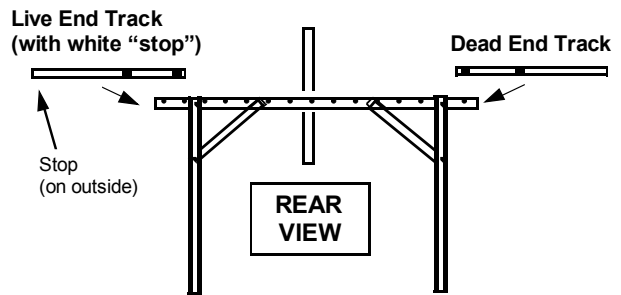
ATTACHING EXTENSION TRACKS TO GROUND MOUNT FRAMES

The **Extension Tracks** provide for the horizontal adjustability on your frame. To attach these, you may need to remove and discard the white plastic "Stop" in the Strongback, on your frame, if one has been installed. A new Stop comes pre-attached to your Live End Extension Track.

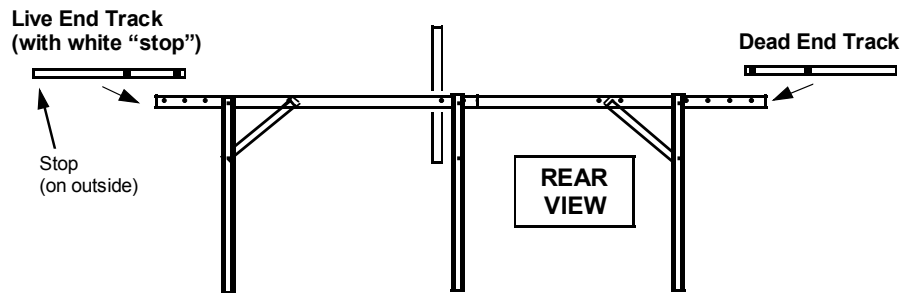
Loosen both square nuts on each track - out to the edges of the bolts. Working from the **REAR** of the display, slide the **Live End Extension Track** (red sticker) onto the **left** end of the **Strongback**. The channel side of the track should face outward. Insert the square nut **and** round washer into the **Strongback** channel, as shown in the detail diagram. Do this for both sets of nuts & bolts on the track. The **white plastic "Stop"** should be on the left outside portion of the track, as shown. Place the **Dead End Extension Track** on the **right** side of the **Strongback** similarly. Do not tighten them until it is time to put your banner on the frame.



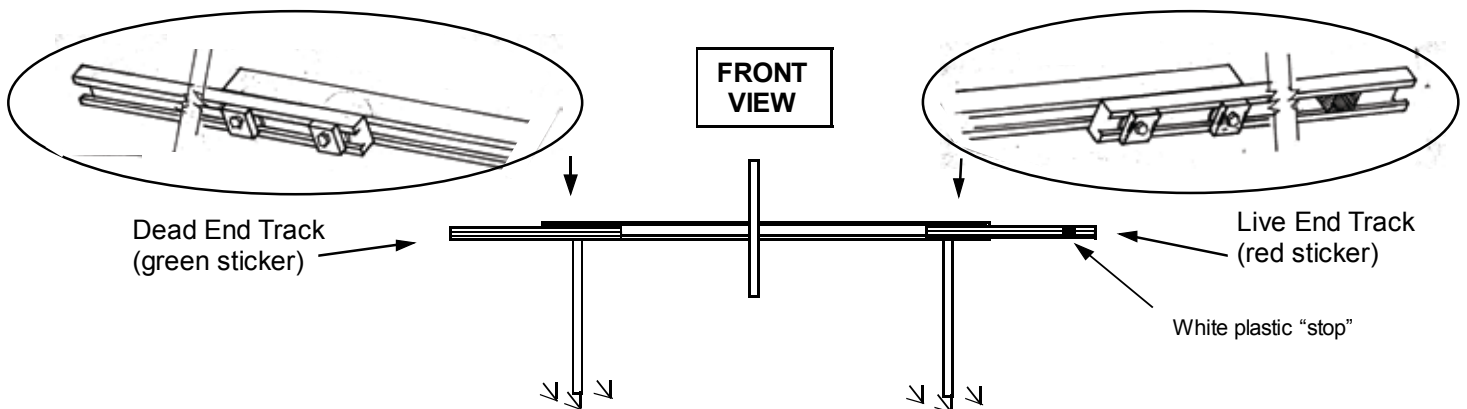
DETAIL—side view



2 Leg Frames —Models up to 14 ft



3-Leg Frames— Models 16 ft & up



QUESTIONS? PROBLEMS ? CALL VOXPOP CUSTOMER SERVICE TOLL FREE AT : **1-800-3-VOXPOP (386-9767)**

VOXPOP
MARKETING SYSTEMS

10746 Worcester Highway P.O. Box 200
Berlin, MD 21811 800-386-9767

Copyright 2009 Voxpop, Inc. Patents Pending